



NZC2030 and Eco Church Programme

Diocese of Liverpool Strategy

Phil Leigh

Diocesan Environment Officer
and

NZC2030 Programme Lead



Liverpool Diocese Net Zero Carbon 2030

Programme Delivery Plan (PDP)

Version 1 - June 2021



Some notable calls to action:

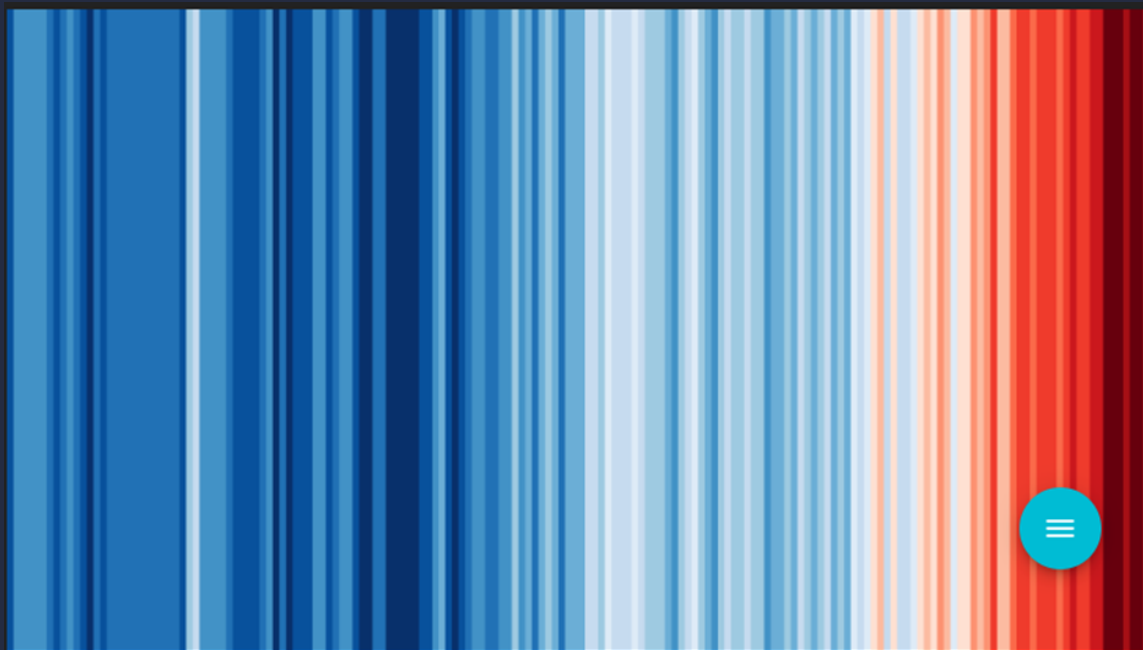
"Human induced climate change is a scientific reality, and its decisive mitigation is a moral and religious imperative for humanity. In this core moral space, the world's religions play a very vital role." **Pope Francis**

"Climate change is the greatest threat to global health in the 21st century." **World Health Organization**

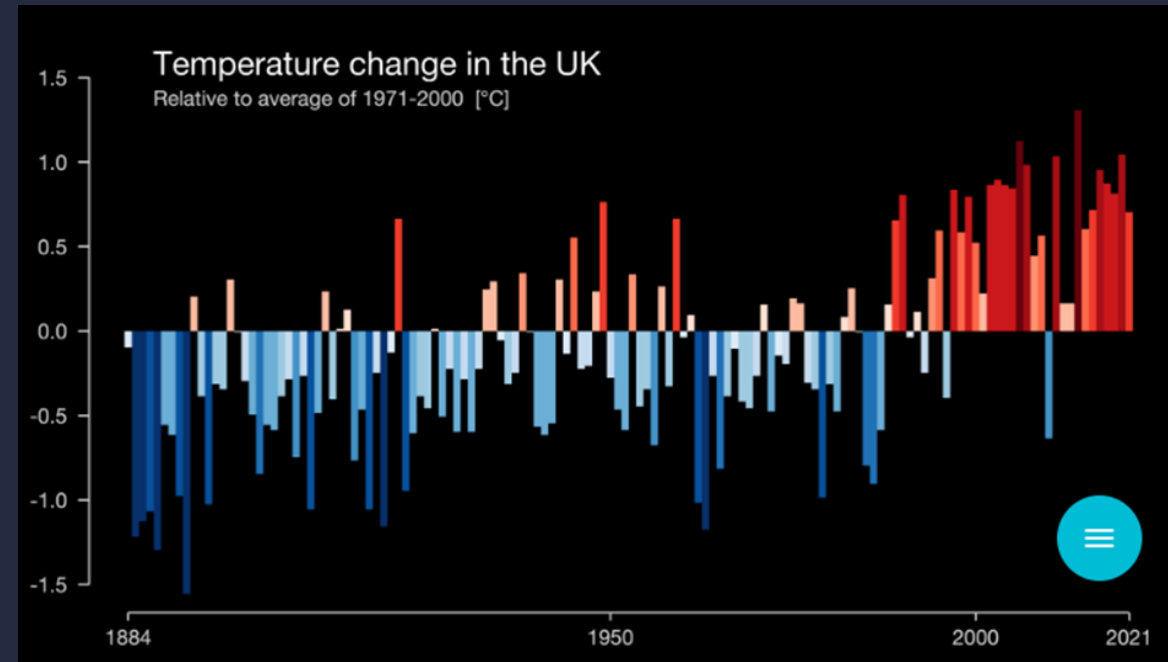
"We are the first generation to feel the effect of climate change and the last generation who can do something about it." **Barack Obama**

"The climate crisis has already been solved. We already have all the facts and solutions. All we have to do is to wake up and change." **Greta Thunberg**

'Barcode' of earth's warming between 1884 and 2021.



Graph of UK warming between 1884 and 2021.



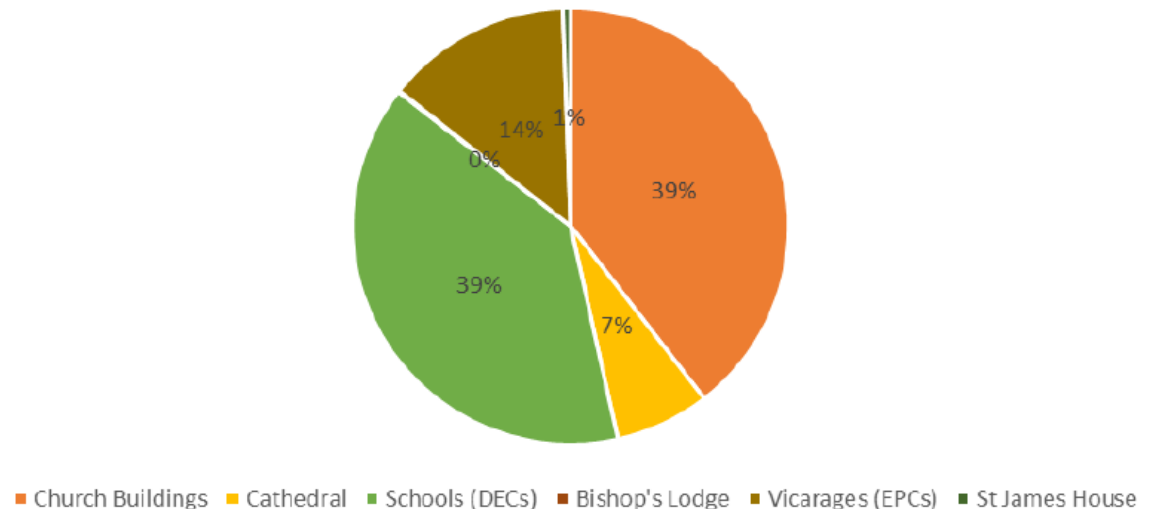
<https://showyourstripes.info/>



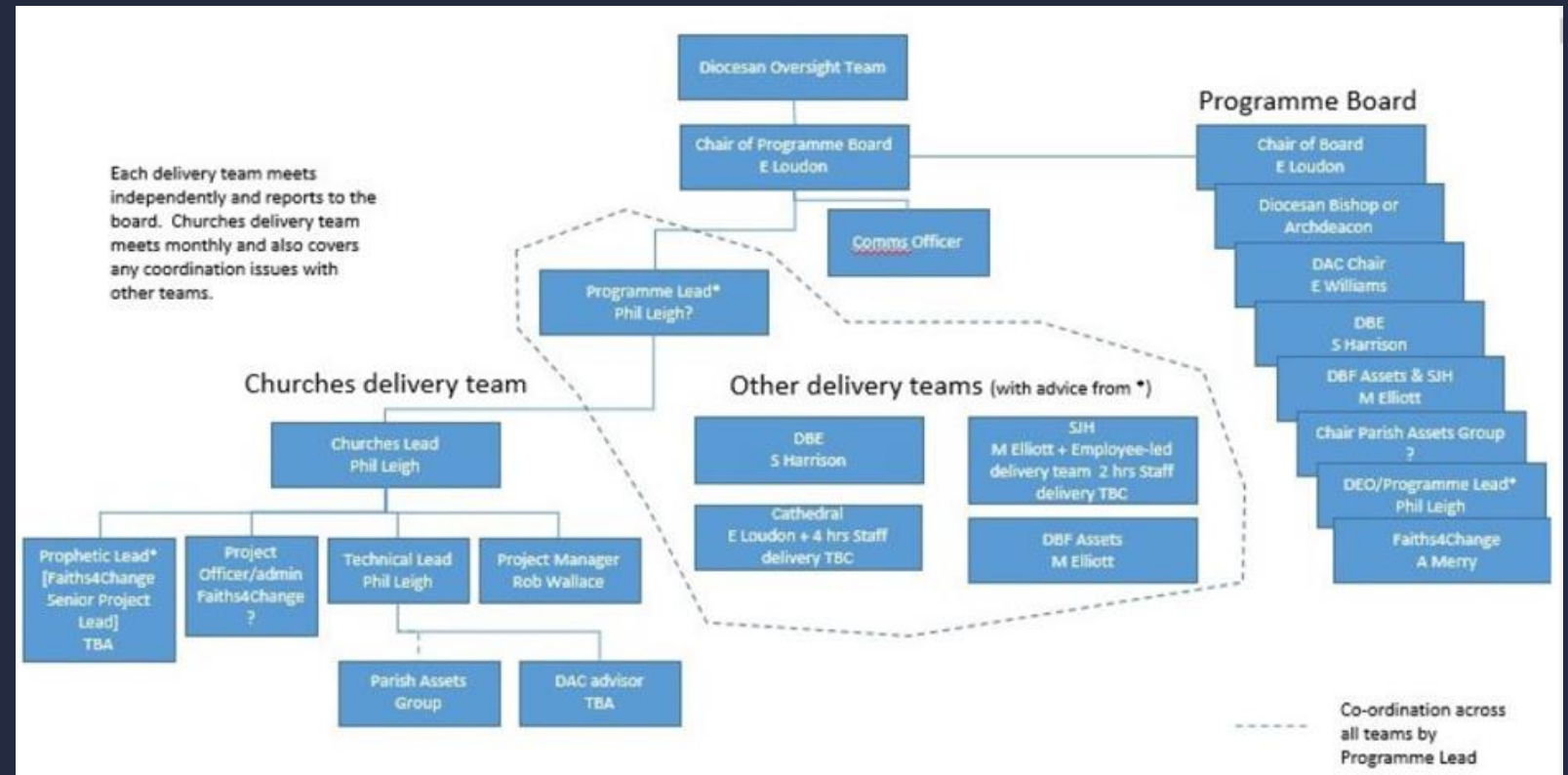
Diocese of Liverpool 2019 Energy Footprint

Building Type	Annual Tonnes CO2 Equivalent (tCO2e)	tCO2e as Overall %
Church Buildings	3,900	39.5
Schools	3,851	39
Vicarages	1,362	13.8
Cathedral	692	7
St James's House	56	0.6
Bishops Lodge	10	0.1
Total	9,871	100

Diocese of Liverpool 'Gross' Energy Footprint 2019



Governance



Group	Meeting Frequency	Reporting
Diocesan Oversight Team (DOT)	Monthly	Programme Board report annually to the DOT
Programme Board	Quarterly	Provided in advance by Programme Delivery Team
Programme Delivery Team	Monthly	Short progress reports tabled at each meeting to review progress and highlight risks / issues.

3 things you can do:

- **Get your church signed up to Eco Church if it's not already.**
- **Make sure your church has filled in the Energy Footprint Tool on the Parish Returns System (Closes July 31st).**
- **If you want to investigate your own carbon footprint you can do this on the Climate Stewards website (Google Climate Stewards Carbon Calculator) or on the WWF website (Google WWF footprint Calculator) .**

Thank you for listening

Phil.Leigh@Liverpool.Anglican.Org

